

# Thailand-Burma Railway Memorial Tour April 2011

**DESIGNED EXPLICITLY TO ATTEND THE  
DAWN ANZAC SERVICE ON 25 APRIL**  
followed by a week long tour of Northern Thailand "in-style"



Phone (08) 8555 0468

Includes: A tour in Bangkok, time to shop plus a dinner in Suan Lum Bazaar. Following our ANZAC DAY Memorial, we embark on a fully escorted week long tour of Northern Thailand staying in fabulous 5 star hotels, visit Hill Tribes, go Elephant Trekking, Chiang Mai's crafts and night markets.

**\$3,465 per person twin share ( includes \$363 in TAXES )**

Single supplement \$880

Departure Taxes, Fees and Fuel Surcharge of \$363 as of October 2010, subject to change.

DEPARTS 21ST APRIL 2011 FOR 12 DAYS



### The Bridge on the River Kwai



Internationally famous, thanks the several motion pictures and books, the black iron bridge was brought from Java by the Japanese supervision by Allied prisoner-of-war labour as part of the Death Railway linking Thailand with Burma. Still in use today, the bridge was the target of frequent Allied bombing raids during World War II and was rebuilt after war ended. The curved spans of the bridge are the original sections. A daily train is still following the historical route from Kanchanaburi to Nam Tok Railway Station.

### Historical background: 'Death Railway'



In 1943 thousands of Allied Prisoners of War (PoW) and Asian labourers worked on the Death Railway under the imperial Japanese army in order to construct part of the 415 km long Burma-Thailand railway. Most of these men were Australians, Dutch and British and they had been working steadily southwards from Thanbyuzayat (Burma) to link with other PoW on the Thai side of the railway. This railway was intended to move men and supplies to the Burmese front where the Japanese were fighting the British. Japanese army engineers selected the route which traversed deep valleys and hills. All the heavy work was done manually either by hand or by elephant as earth moving equipment was not available. The railway line originally ran within 50 meters of the Three Pagodas Pass which marks nowadays the border to Burma. However after the war the entire railway was removed and sold as it was deemed unsafe and politically undesirable. The prisoners lived in squalor with a near starvation diet. They were subjected to captor brutality and thus thousands perished. The men worked from dawn until after dark and often had to trudge many kilometres through the jungle to return to base camp where Allied doctors tended the injured and diseased by many died. After the war the dead were collectively reburied in the War Cemeteries and will remain forever witness to a brutal and tragic ordeal.



## ANZAC DAY CEREMONY TOUR



LEFT: Chiang Mai Night Market

ABOVE: The Tigers are like pets, ask Sylvia !

### Day 1: 21 APRIL Australia to Bangkok

Depart Australia on Singapore Airlines connecting in Singapore for your flight to Bangkok. Upon arrival at 10:00pm Suvarnabhumi airport in Bangkok, your guide will be waiting for you in the arrival hall and bring you by air-conditioned coach to your hotel in Bangkok. On the way your guide will give you some more information about the city and its rich history as well as Thai culture in general.

Overnight: Holiday Inn Bangkok

### Day 2: 22 APRIL BANGKOK (B, D)

Breakfast at hotel, morning free at leisure.

Afternoon, the tour starts with the Grand Palace where you visit the main sites including the magnificent throne halls and the emerald Buddha. We then continue to visit Wat Po. Bangkok's oldest temple is home to the magnificent reclining Buddha as well as the first school of traditional medicine and Thai massage and is also regarded as Thailand's first University.

**Time:** 1.00 - 5.00pm **Note:** Appropriate dress is required (or rent on site). Dinner at hotel.

Overnight: Holiday Inn Bangkok

### Day 3: 23 APRIL BANGKOK (B, D)

Breakfast at hotel, free day at leisure.

Evening, enjoy an al fresco dinner at Joe Louis restaurant in the heart of the Suan Lum Night Bazaar. Enjoy great Thai food as well as the vibrant atmosphere of Bangkok's best and busiest night market.

Overnight: Holiday Inn Bangkok

### Day 4: 24 APRIL BANGKOK – AYUTHAYA - KANCHANABURI (B, L, D)

Morning pick up from your hotel and to the river pier in Bangkok city for boarding the luxurious air-conditioned cruiser the Grand Pearl upriver along the Chao Phraya River to Nonthaburi. Enjoy a superb buffet lunch while witnessing rural Thai life along both sides of the River of Kings. We then continue by road to the ancient city of Ayutthaya. Visit three of the most important of the ruined temples in Ayutthaya historical park. Continue to Bang Pa In to see the summer palace built by King Rama IV at a time of growing European influence in Thailand. We then head to Kanchanaburi for dinner and overnight.

Overnight: Royal River Kwai

### Day 5: 25 APRIL RIVER KWAI (B, L) ANZAC DAY

Early morning, you will be transferred to Hell Fire Pass Museum where the dawn service will be held around 4.30 a.m.

Afterwards, we head back to your hotel for breakfast and continue to fulfil your ANZAC day at the war cemetery, a visit to the Railway Museum and the JEATH Museum as well as a one hour local train ride through Kwai Noi Gorge. Lunch is included at a local restaurant before we continue to Wat Seau or Tiger Temple where you can walk the tigers with the Monks on hand.

Overnight: Royal River Kwai

### Day 6: 26 APRIL KANCHANABURI – BANGKOK - CHIANG RAI (B, D)

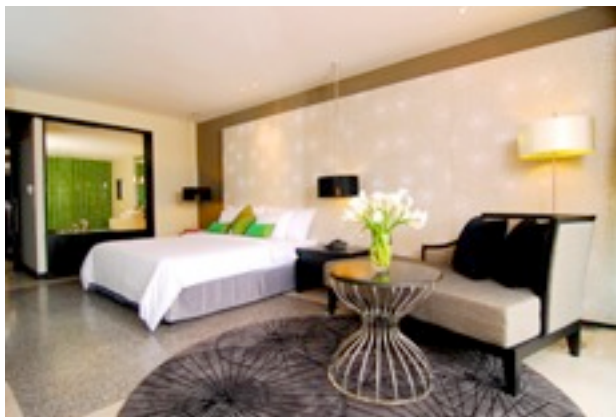
Breakfast at hotel and we then head to Suvarnabhumi Bangkok Airport for your flight at 1.25pm.

Upon arrival at the airport in Chiang Rai at 2.45pm, your guide will be waiting for you in the arrival hall and bring you by air-conditioned vehicle to your hotel.

Dinner at hotel

Overnight: Le Meridien Chiang Rai

## ANZAC DAY CEREMONY TOUR



LEFT: Le Meridien Resort in Chiang Rai

ABOVE: Le Meridien Chiang Mai

### Day 7: 27 APRIL CHIANG RAI (B, L, D)

Start your full-day excursion to Mae Chan to visit the Yao and the Akha hilltribe villages. Continue on to Mae Sai, the farthestmost northern border between Thailand and Burma, with its bustling market place. Lunch is served at a local restaurant. Drive on to the Golden Triangle area where the mighty Mae Khong River joining the Ruak River and forming the "triangle" with the borders of Thailand, Burma, and Laos convene. Visit also the Opium Museum. Then continue on to the old city of Chiang Saen (A.D. 1260) on the steep banks of Mae Khong River opposite to Laos, to witness some magnificent ancient ruins and temples.

Dinner at hotel

Overnight: Le Meridien Chiang Rai

### Day 8: 28 APRIL CHIANG RAI – CHIANG MAI (B, L, D)

Breakfast at hotel.

Pick up in Chiang Rai head South-West towards Chiang Mai after a visit to Wat Rong Khun the "White Temple". Coffee break on the way at the excellent Jarin Garden Resort famous for its homemade pies or at Cabbage and Condoms

operated by the Population and Community Development Association to serve and assist the rural people. Lunch at the local restaurant. A last stop will also be made at Mae Krachan hot springs before arriving to Chiang Mai.

**Note:** This is a 3 to 4 hour drive.

Enjoy an evening out at a traditional Khantoke Dinner. Your meal is served on special, low, circular tables called *toke*. You are served delicious Northern Thai cuisine accompanied by Northern Thai folk dancing. After the dinner, participants will light a "khom loy" and launch it in the cool night following the local belief that misfortune will be floated away...

Overnight: Le Meridien Chiang Mai

### Day 9: 29 APRIL CHIANG MAI (B, L)

Explore the ancient and modern city of Chiang Mai, including its old City walls, gates and city moat, markets, residential areas, foreign Consulates, government buildings and Tapae, Chiang Mai's main street. Continue with a drive up mount Doi Suthep to Wat Phra Thad Doi Suthep (AD 1384), the most sacred temple in Northern Thailand. Inside the temple's cloister you will see one of the most sacred stupas in all of Thailand. A

panoramic view of the city can be seen from here at 3,500 feet above sea level. Continue on to visit Wat Jed Yot (AD 1455) with its seven spire stupa, and Wat Suan Dok where the ashes of Chiang Mai's royal family are interred.

Lunch at a local restaurant. Chiang Mai is famous for the quality and uniqueness of its local handicrafts. Visit Sunkampaeng, with its Thai Silk and cotton looms; Bo Sarng, the paper and umbrella-making village; the Celadon kilns, with its exquisite traditional fired stoneware; lacquer wares, teak-wood carving, jewelry, and silverware factories. This half day tour shows you how Chiang Mai craftsmen produce their crafts by hand from the first stage to the finished product, and give you an idea of what there is to buy and take home as souvenirs from Chiang Mai.

Overnight: Le Meridien Chiang Mai

### Day 10: 30 APRIL CHIANG MAI (B, L)

Breakfast at hotel.

Depart your hotel for the Chiang Dao Young Elephants Training Camp, 56 km from Chiang Mai. Enjoy a one hour elephant ride into the thick forest surrounding the camp before watching the



## ANZAC DAY CEREMONY TOUR



ABOVE: Ancient Thai Temple

LEFT: Group off on an Elephant Trek

elephants taking their morning bath in the running stream. After their bath, the trainers and elephants will demonstrate a number of their skills for you. You depart the elephant camp to the Mae Ping River where you meet your bamboo raft driver for a leisurely, one hour ride down the river. Lunch at a local restaurant. Continue your tour to the beautiful Orchid Nursery where more than 50 types of orchids bloom year-round. You will also visit a Butterfly Farm where you will see numerous colorful and rare butterflies.

Overnight: Le Meridien Chiang Mai

### Day 11: 01 MAY CHIANG MAI (B, L)

Breakfast at hotel. Check out by midday, then your guide will meet you at your hotel for the transfer by air-conditioned coach to Chiang Mai Airport for your departure flight on Singapore Airlines direct to Singapore, after a short stop we board your overnight flight to your Australian city.

Overnight: In Flight

### Day 12: 02 MAY ARRIVE HOME

Arrive into your home city

**\$3,465 per person twin share**  
( includes \$363 in TAXES )  
Single supplement \$980  
Departure Taxes, Fees and Fuel  
Surcharge of \$363 as of October  
2010, subject to change.

**PACKAGE TOUR INCLUSIONS:**  
International economy class  
airfares ex Australia with  
Singapore Airlines, transfers and  
tours in air conditioned coaches,  
daily breakfasts plus lunches and  
dinners as per itinerary,  
accommodation in deluxe five star  
hotels in Northern Thailand. While  
the River Kwai Resort & Spa  
consists of 66 air conditioned  
guest rooms with all facilities.  
Exclusively conducted for  
Specialised Travel.

**PACKAGE DOES NOT INCLUDE:**  
Travel Insurance ( highly  
recommended, 15% Group  
discount applies ) AUST, NZ, UK  
passport holders gain entry Visa  
on arrival at no cost. Tipping of  
Guides at your discretion (\$2 per  
person per day).

### TRAVEL INSURANCE Group DISCOUNT

The rates below are subject to you not having any pre-existing illness. If you are currently under care of your Doctor, please request a Travellers Medical Appraisal Form from Specialised Travel who will assist you in what needs to be done.

#### **SURESAVE Policy for 14 days :**

0 — 59 years of age \$167 per person  
Discounted Price \$142  
60—70 years of age \$185 per person  
Discounted Price \$158  
71 - 75 years of age \$298 per person  
Discounted Price \$254  
76—80 years of age \$384 per person  
Discounted Price \$326  
80 + years of age \$473 per person  
Discounted Price \$402

### SPECIALISED TRAVEL Phone: (08) 8555 0468

[manager@specialisedtravel.com.au](mailto:manager@specialisedtravel.com.au)  
[www.specialisedtravel.com.au](http://www.specialisedtravel.com.au)  
23 Daniel Avenue, Goolwa SA 5214  
Licensed Travel Agent TTA

# TERMS AND CONDITIONS

## ITINERARY AND COSTS

- Prices are based on the exchange rate at the time of printing and are subject to alteration accordingly. They are quoted in Australian Dollars and are GST free for international travel, and GST inclusive for domestic travel and services.
- Details of particular hotels described in the itinerary may change due to quality control by the Tour Operator. Every endeavour will be made to keep details up to date. A hotel of similar or superior standard will be substituted.
- Flight schedules are correct at the time of printing. Any changes are outside of the control of Specialised Tours. Should the itinerary and tour costs change as a result of schedule changes, the passenger will bear the difference.
- Tour itinerary is based on a minimum of 15 travellers
- In the event that change(s) cause the tour to be substantially different than the initial price quoted, the passenger has the right to withdraw from the tour. Some airline and/or hotel deposits may be forfeited.

## MEDICAL REQUIREMENTS and TRAVEL INSURANCE

- It is your personal responsibility to ensure you are adequately protected for travel outside of Australia. You can obtain information from your family doctor or consult the Traveller's Medical and Vaccination Centre in your capital city by phoning 1300 658 844.
- Travel Insurance is highly recommended. Specialised Tours will require proof of a policy or a signed Declaration from any traveller declining Travel Insurance.

## CANCELLATION CLAUSE

- Bookings cancelled at any time after confirmation will automatically incur a loss of deposit.
- In addition to the loss of deposit, other charges may be enforced by the airline, hotel or tour operator up to 100% of the tour cost, particularly within 45 days of departure.
- Any group tour may be cancelled if insufficient numbers are booked or events outside of our control cause cancellation. Optional dates will be offered in such cases.
- Upon paying any money for deposits, part or full amounts, it is desirable to purchase your Travel Insurance to guard against most forms of cancellation.

## ROOM TYPES and BEDDING

- Prices for this tour are based on existing bedding at the hotels selected. Additional bedding will need to be specifically requested and is subject to availability.
- A Single Supplement is required to be paid if sole occupancy of a room is required.
- Single, interconnecting, twin as against double, smoking or non-smoking rooms need to be clearly referred to on the booking form, and are based upon availability.

## PASSPORT VALIDITY and VISA REQUIREMENTS

- Passports will require at least six months validity from the date of entry into a foreign country.
- Depending upon your Nationality, a Visa will be required prior to departing Australia. The appropriate forms and visa cost will be provided to you. Specialised Travel will process the application to the Consulate by secure TRAVCOUR

## BAGGAGE ALLOWANCE and SECURITY CONTROL

- Economy Class travellers are allowed 20kgs per person. Business Class passengers are permitted 30 Kgs. No one bag may exceed 35 Kgs.
- Carry-on luggage is restricted to 5 Kgs, and no larger in size than 48cm X 34 cm X 23 cm.
- No sharp objects such as a nail file, scissors, Swiss Army knife, etc is permitted in the aircraft cabin. Please ensure such items are packed into your check-in luggage. New rules apply for liquids, aerosols and gels.
- Any charges for excess luggage will be at the passenger's expense and payable upon check-in.

## RESPONSIBILITIES

- Specialised Tours does not accept any responsibility for any act or omission causing loss or injury to persons or property whether by negligence or otherwise on the part of the principals (the airline, hotel, tour operator, coach company or service provider) providing any facilities or services described in the tour package.
- Specialised Tours is not liable in contract or in tort for any injury, damage, loss, delay, additional expense or inconvenience caused directly or indirectly by force majeure or other events which are beyond the control of Specialised Tours, or which are preventable, including without limitation, delays, changes of aircraft services, alterations to any other travel service, illness, injuries, strikes, civil disturbances, quarantines, floods or other disturbances of whatsoever nature interfering with, altering, or adding to the cost of the services requested or booked.
- Specialised Tours is not liable for any personal dissatisfaction with properties or sites. Specialised Tours will do its best to ensure all arrangements are as agreed and only accepts liability if loss is sustained as a result of its negligence or that of its employees.
- Consumer Claims should be filed within 30 days of return to Australia in writing, be it for an Insurance claim, or directed to the Travel Compensation Fund or Specialised Travel for action.
- Specialised Tours is a division of Specialised Travel, Licensed Travel Agent TTA155853.

## PAYMENTS

- \$400 deposit PER PERSON is due on booking
- Balance is due 6 weeks prior to departure
- Payments can be made by Cash, Cheque or Direct Bank transfer (see booking form for details)
- Credit Cards will incur a Merchant Fee: VISA & Mastercard 1.5%, AMEX 3%